

GTB SERIES



Swivel Head Section



Wheel Face Brake



Directional Lock

10,000 Lbs. Load Capacity Forged Kingpinless Type Casters

Single piece Drop Forged AISI 1045 Steel Top Plate and Fork Base

Precision CNC Machined Raceways, 4-1/2" dia with 3/4" ball bearings

Induction Hardening of Raceways ensures uniform depth of hardness

Totally Sealed Swivel Head with Grease Nipple

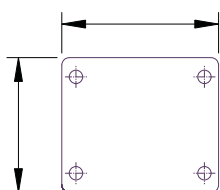
3/8" Thick x 4" wide fork legs robotically welded Inside and Outside to 4-1/2" fork spacing

1" Wheel axle

4 Position Directional Lock Slots

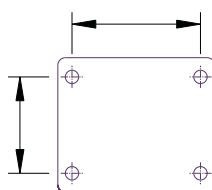
Finish : Bright Zinc Plated

Top Plate



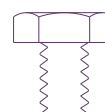
6-1/4" x 7-1/4"

Bolt Hole Centers



4-1/2" x 6"

Attaching Bolt Size



1/2"

'GTB' SERIES CASTERS WITH 'SAS' SERIES HIGH LOAD CAPACITY POLYURETHANE WHEELS

- High Load Capacity Liquid Cast Premium Polyurethane Wheels 93 ± 3 Shore A
- Polyurethane firmly bonded to precision machined Cast Iron Core
- Low rolling resistance; Smooth and Noiseless running.
- Non-Marking and floor protective.
- High Abrasion, Cut and Tear resistant
- 100% tested and guaranteed against Bond Failures.
- Bearing Options:- Precision Ball Bearings; Tapered Roller Bearings
Roller Bearings
- Temperature Range: -40° F to +180° F



Part No. Swivel Caster	Part No. Swivel with Wheel Brake	Part No. Rigid Caster	Wheel Dia (inch)	Tread Width (inch)	Load Capacity (Lbs)	Overall Height (inch)	Swivel Radius (inch)	Swivel Radius with wheel face brake
GTB-63S-SAS	GTB-63S-SAS-WFB	GTB-63R-SAS	6	3	2300	8-1/2	5-1/8	11-1/2
GTB-83S-SAS	GTB-83S-SAS-WFB	GTB-83R-SAS	8	3	3100	10-1/2	6-1/4	12-3/4
GTB-84S-SAS	GTB-84S-SAS-WFB	GTB-84R-SAS	8	4	4000	10-1/2	6-1/4	12-3/4
GTB-103S-SAS	GTB-103S-SAS-WFB	GTB-103R-SAS	10	3	4000	12-1/2	7-1/2	14
GTB-104S-SAS	GTB-104S-SAS-WFB	GTB-104R-SAS	10	4	4850	12-1/2	7-1/2	14
GTB-123S-SAS	GTB-123S-SAS-WFB	GTB-123R-SAS	12	3	4850	15-1/2	8-1/4	14-3/4
GTB-124S-SAS	GTB-124S-SAS-WFB	GTB-124R-SAS	12	4	6200	15-1/2	8-1/4	14-3/4

'GTB' SERIES CASTERS WITH 'SZS' SERIES THICK TREADED ELASTIC URETHANE WHEELS

- Elastic 85±3 Shore A Liquid Cast Polyurethane firmly bonded to Cast Iron Core
- Reduced noise due to cushioning of loads,
Lively Polyurethane allows wheels to Flex and Roll over debris
- Excellent for power towing applications
- Non-Marking and floor protective.
- 100% Tested and Guaranteed against bond failures
- Bearing Options:- Precision Ball Bearings; Tapered Roller Bearings
Roller Bearings;
- Temperature Range:- -40° F to + 180° F



Part No. Swivel Caster	Part No. Swivel with Wheel Brake	Part No. Rigid Caster	Wheel Dia (inch)	Tread Width (inch)	Load Capacity (Lbs)	Overall Height (inch)	Swivel Radius (inch)	Swivel Radius with wheel face brake (inch)
GTB-63S-SZS	GTB-63S-SZS-WFB	GTB-63R-SZS	6	3	1800	8-1/2	5-1/8	11-1/2
GTB-83S-SZS	GTB-83S-SZS-WFB	GTB-83R-SZS	8	3	2800	10-1/2	6-1/4	12-3/4
GTB-84S-SZS	GTB-84S-SZS-WFB	GTB-84R-SZS	8	4	3000	10-1/2	6-1/4	12-3/4
GTB-103S-SZS	GTB-103S-SZS-WFB	GTB-103R-SZS	10	3	3000	12-1/2	7-1/2	14
GTB-104S-SZS	GTB-104S-SZS-WFB	GTB-104R-SZS	10	4	3650	12-1/2	7-1/2	14
GTB-123S-SZS	GTB-123S-SZS-WFB	GTB-123R-SZS	12	3	3200	15-1/2	8-1/4	14-3/4
GTB-124S-SAS	GTB-124S-SAS-WFB	GTB-124R-SAS	12	4	4600	15-1/2	8-1/4	14-3/4

'GTB' SERIES CASTERS WITH 'SFS' SERIES SOLID ELASTOMER WHEELS

- The Ultimate Real Solid Elastomer Wheels exclusively developed by Muvtons
- Premium Liquid Cast 73 ± 3 Shore D Polyurethane locked mechanically to a non-corrosive metallic core that holds the precision bearings and provides structural rigidity.
- Resist compression set and provide excellent resilience for easy movement
- Non-Marking and floor protective
- Can be used for corrosive applications with suitable bearings.
- 100% Tested and Guaranteed against failures
- Bearing Options:- Precision Ball Bearings; Tapered Roller Bearings
Roller Bearings
- Temperature Range:- -40° F to + 180° F



Part No. Swivel Caster	Part No. Swivel with Wheel Brake	Part No. Rigid Caster	Wheel Dia (inch)	Tread Width (inch)	Load Capacity (Lbs)	Overall Height (inch)	Swivel Radius (inch)	Swivel Radius with wheel face brake (inch)
GTB-63S-SFS	GTB-63S-SFS-WFB	GTB-63R-SFS	6	3	2400	8-1/2	5-1/8	11-1/2
GTB-83S-SFS	GTB-83S-SFS-WFB	GTB-83R-SFS	8	3	2500	10-1/2	6-1/4	12-3/4
GTB-84S-SFS	GTB-84S-SFS-WFB	GTB-84R-SFS	8	4	3800	10-1/2	6-1/4	12-3/4
GTB-103S-SFS	GTB-103S-SFS-WFB	GTB-103R-SFS	10	3	3000	12-1/2	7-1/2	14
GTB-104S-SFS	GTB-104S-SFS-WFB	GTB-104R-SFS	10	4	4200	12-1/2	7-1/2	14
GTB-123S-SFS	GTB-123S-SFS-WFB	GTB-123R-SFS	12	3	3400	15-1/2	8-1/4	14-3/4
GTB-124S-SFS	GTB-124S-SFS-WFB	GTB-124R-SFS	12	4	4500	15-1/2	8-1/4	14-3/4

'GTB' SERIES CASTERS WITH 'SEB' SERIES HEAVY DUTY MOLDON RUBBER WHEELS

- Elastic Rubber tired wheels chemically bonded to precision machined Cast Iron Cores.
- Highly resilient 75 ± 5 Shore A rubber.
- Smooth and silent running in power towing applications.
- Bearing Options:- Precision Ball Bearings; Tapered Roller Bearings
Roller Bearings
- Temperature Range: -40° F to +180 ° F



Part No. Swivel Caster	Part No. Swivel with Wheel Brake	Part No. Rigid Caster	Wheel Dia (inch)	Tread Width (inch)	Load Capacity (Lbs)	Overall Height (inch)	Swivel Radius (inch)	Swivel Radius with wheel face brake (inch)
GTB-63S-SEB	GTB-63S-SEB-WFB	GTB-63R-SEB	6	3	950	8-1/2	5-1/8	11-1/2
GTB-83S-SEB	GTB-83S-SEB-WFB	GTB-83R-SEB	8	3	1200	10-1/2	6-1/4	12-3/4
GTB-84S-SEB	GTB-84S-SEB-WFB	GTB-84R-SEB	8	4	1500	10-1/2	6-1/4	12-3/4
GTB-103S-SEB	GTB-103S-SEB-WFB	GTB-103R-SEB	10	3	1650	12-1/2	7-1/2	14
GTB-104S-SEB	GTB-104S-SEB-WFB	GTB-104R-SEB	10	4	2100	12-1/2	7-1/2	14
GTB-123S-SEB	GTB-123S-SEB-WFB	GTB-123R-SEB	12	3	1850	15-1/2	8-1/4	14-3/4
GTB-124S-SEB	GTB-124S-SEB-WFB	GTB-124R-SEB	12	4	2500	15-1/2	8-1/4	14-3/4

'GTB' SERIES CASTERS WITH 'MCI' SERIES CAST IRON WHEELS

- Special Grey cast iron wheels - solid core construction
- Fully machined tread faces – crown treaded for easy maneuverability.
- High abrasion and oil resistant
- Can be used upto 800° F with appropriate wheel bearings.
- Bearing Options:- Precision Ball Bearings; Tapered Roller Bearings
Roller Bearings
- Temperature Range: upto 800° F with appropriate bearings



Part No. Swivel Caster	Part No. Swivel with Wheel Brake	Part No. Rigid Caster	Wheel Dia (inch)	Tread Width (inch)	Load Capacity (Lbs)	Overall Height (inch)	Swivel Radius (inch)	Swivel Radius with wheel face brake (inch)
GTB-63S-MCI	GTB-63S-MCI-WFB	GTB-63R-MCI	6	3	2400	8-1/2	5-1/8	11-1/2
GTB-83S-MCI	GTB-83S-MCI-WFB	GTB-83R-MCI	8	3	3500	10-1/2	6-1/4	12-3/4
GTB-84S-MCI	GTB-84S-MCI-WFB	GTB-84R-MCI	8	4	5000	10-1/2	6-1/4	12-3/4
GTB-103S-MCI	GTB-103S-MCI-WFB	GTB-103R-MCI	10	3	4000	12-1/2	7-1/2	14
GTB-104S-MCI	GTB-104S-MCI-WFB	GTB-104R-MCI	10	4	6000	12-1/2	7-1/2	14
GTB-123S-MCI	GTB-123S-MCI-WFB	GTB-123R-MCI	12	3	4500	15-1/2	8-1/4	14-3/4
GTB-124S-MCI	GTB-124S-MCI-WFB	GTB-124R-MCI	12	4	8000	15-1/2	8-1/4	14-3/4

'GTB' SERIES CASTERS WITH 'MDW' SERIES DUCTILE STEEL WHEELS

- Special Ductile Cast Steel wheels with fully machined tread face
- Crown Tread Face makes maneuverability easy
- Higher Load Capacities compared to Cast Iron Wheels
- Suitable for extra heavy loads towed in punishing conditions.
- High abrasion and oil resistance
- Bearing Options:- Precision Ball Bearings; Tapered Roller Bearings
Roller Bearings
- Temperature Range: upto 800° F with appropriate bearings



Part No. Swivel Caster	Part No. Swivel with Wheel Brake	Part No. Rigid Caster	Wheel Dia (inch)	Tread Width (inch)	Load Capacity (Lbs)	Overall Height (inch)	Swivel Radius (inch)	Swivel Radius with wheel face brake (inch)
GTB-63S-MDW	GTB-63S-MDW-WFB	GTB-63R-MDW	6	3	3300	8-1/2	5-1/8	11-1/2
GTB-83S-MDW	GTB-83S-MDW-WFB	GTB-83R-MDW	8	3	5500	10-1/2	6-1/4	12-3/4
GTB-84S-MDW	GTB-84S-MDW-WFB	GTB-84R-MDW	8	4	8000	10-1/2	6-1/4	12-3/4
GTB-103S-MDW	GTB-103S-MDW-WFB	GTB-103R-MDW	10	3	6000	12-1/2	7-1/2	14
GTB-104S-MDW	GTB-104S-MDW-WFB	GTB-104R-MDW	10	4	10000	12-1/2	7-1/2	14
GTB-123S-MDW	GTB-123S-MDW-WFB	GTB-123R-MDW	12	3	6500	15-1/2	8-1/4	14-3/4
GTB-124S-MDW	GTB-124S-MDW-WFB	GTB-124R-MDW	12	4	10000	15-1/2	8-1/4	14-3/4

'GTB' SERIES CASTERS WITH 'DF' SERIES DROP FORGED STEEL WHEELS

- Hot forged from AISI 1045 steel with fully machined tread faces
- Virtually indestructible and easy to maneuver
- High abrasion and oil resistant
- Can be used in the roughest of applications on the poorest of floors
- Bearing Options:- Precision Ball Bearings; Tapered Roller Bearings
Roller Bearings
- Temperature Range: -150° F upto 800° F with appropriate bearings



Part No. Swivel Caster	Part No. Swivel with Wheel Brake	Part No. Rigid Caster	Wheel Dia (inch)	Tread Width (inch)	Load Capacity (Lbs)	Overall Height (inch)	Swivel Radius (inch)	Swivel Radius with wheel face brake (inch)
GTB-63S-DF	GTB-63S-DF-WFB	GTB-63R-DF	6	3	6600	8-1/2	5-1/8	11-1/2
GTB-83S-DF	GTB-83S-DF-WFB	GTB-83R-DF	8	3	6800	10-1/2	6-1/4	12-3/4
GTB-84S-DF	GTB-84S-DF-WFB	GTB-84R-DF	8	4	10000	10-1/2	6-1/4	12-3/4
GTB-103S-DF	GTB-103S-DF-WFB	GTB-103R-DF	10	3	10000	12-1/2	7-1/2	14
GTB-104S-DF	GTB-104S-DF-WFB	GTB-104R-DF	10	4	10000	12-1/2	7-1/2	14
GTB-123S-DF	GTB-123S-DF-WFB	GTB-123R-DF	12	3	10000	15-1/2	8-1/4	14-3/4
GTB-124S-DF	GTB-124S-DF-WFB	GTB-124R-DF	12	4	10000	15-1/2	8-1/4	14-3/4

'GTB' SERIES CASTERS WITH MUVTUFF 'MCNY' SERIES CAST POLY WHEELS

- Machined from Tough, High Impact resistant Cast Polyamide
- Ultimate choice for Extremely High Load applications to replace metallic wheels
- Offer very high Abrasion resistance and very low rolling resistance under extreme loads
- Resistant to Salt, Grease, Alcohol and mild acids - can be used in corrosive applications with appropriate bearings
- Bearing Options:- Precision Ball Bearings; Tapered Roller Bearings
Roller Bearings
- Temperature Range: -40° F to +180° F with appropriate bearings



Part No. Swivel Caster	Part No. Swivel with Wheel Brake	Part No. Rigid Caster	Wheel Dia (inch)	Tread Width (inch)	Load Capacity (Lbs)	Overall Height (inch)	Swivel Radius (inch)	Swivel Radius with wheel face brake (inch)
GTB-63S-MCNY	GTB-63S-MCNY-WFB	GTB-63R-MCNY	6	3	6000	8-1/2	5-1/8	11-1/2
GTB-83S-MCNY	GTB-83S-MCNY-WFB	GTB-83R-MCNY	8	3	10000	10-1/2	6-1/4	12-3/4
GTB-84S-MCNY	GTB-84S-MCNY-WFB	GTB-84R-MCNY	8	4	10000	10-1/2	6-1/4	12-3/4
GTB-103S-MCNY	GTB-103S-MCNY-WFB	GTB-103R-MCNY	10	3	10000	12-1/2	7-1/2	14
GTB-104S-MCNY	GTB-104S-MCNY-WFB	GTB-104R-MCNY	10	4	10000	12-1/2	7-1/2	14
GTB-123S-MCNY	GTB-123S-MCNY-WFB	GTB-123R-MCNY	12	3	10000	15-1/2	8-1/4	14-3/4
GTB-124S-SAS	GTB-124S-SAS-WFB	GTB-124R-SAS	12	4	10000	15-1/2	8-1/4	14-3/4